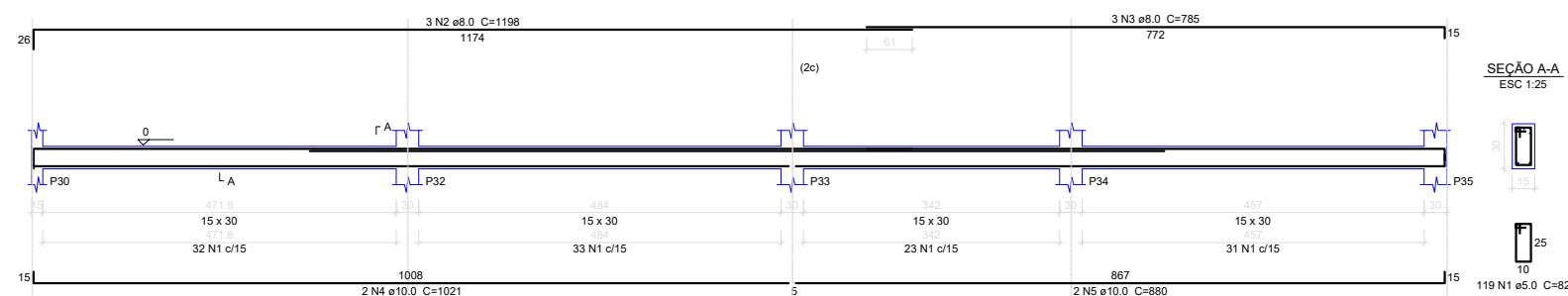
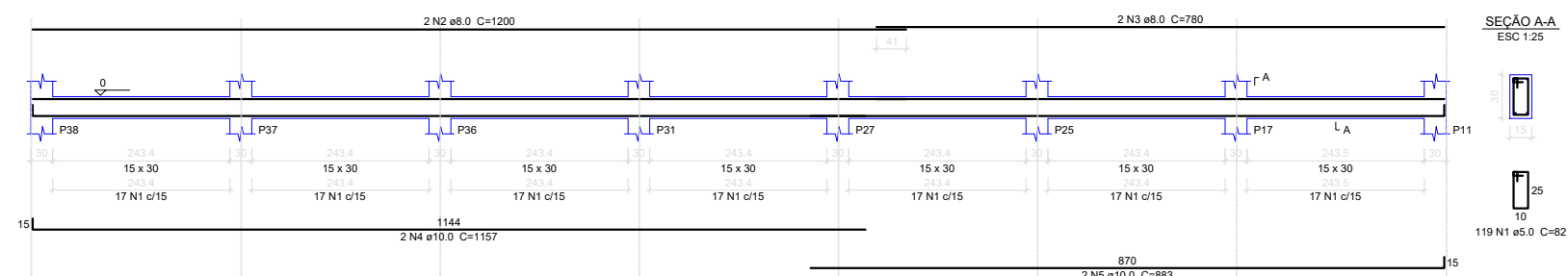


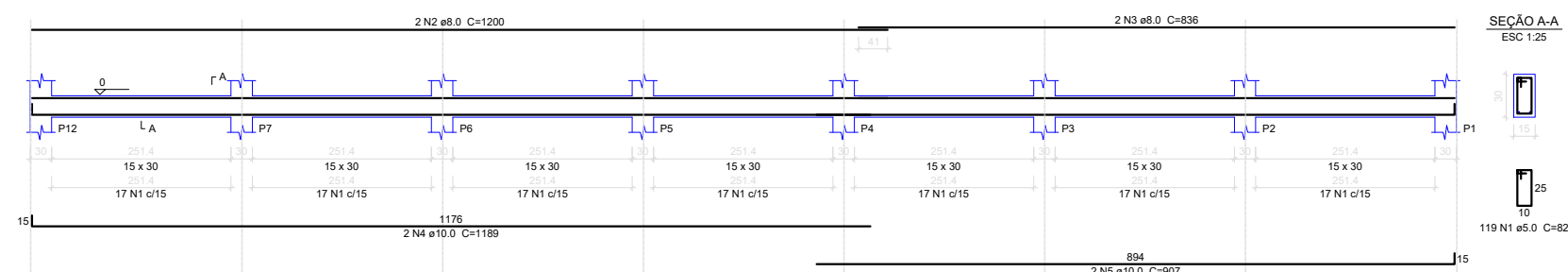
VB9  
ESC 1:50



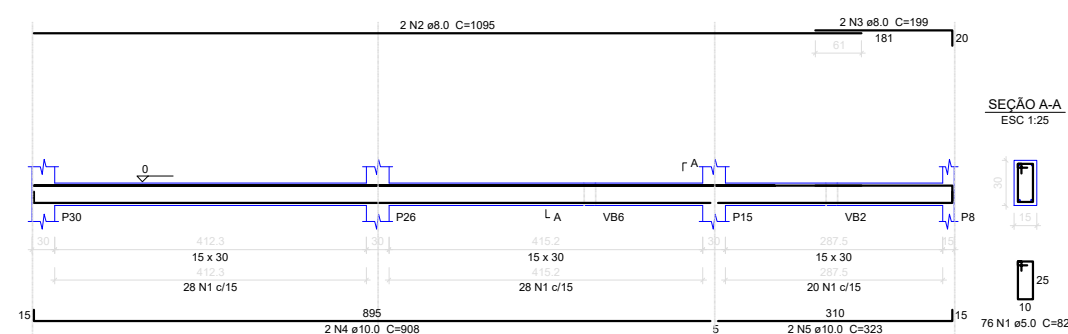
VB10  
ESC 1:50



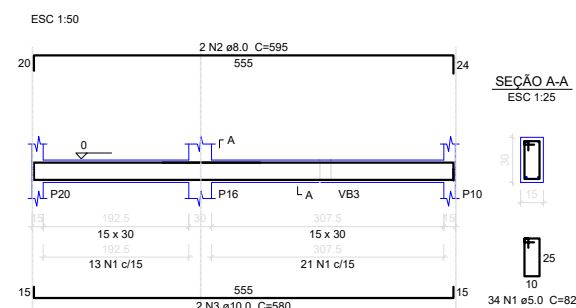
VB11  
ESC 1:50



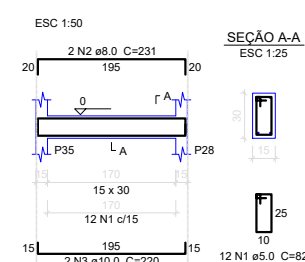
VB12  
ESC 1:50



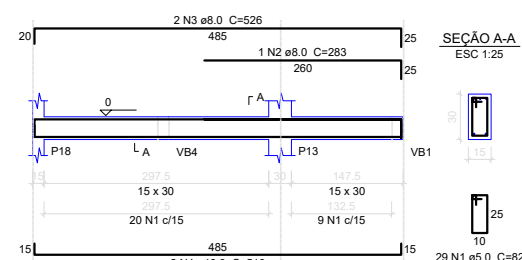
VB15  
ESC 1:50



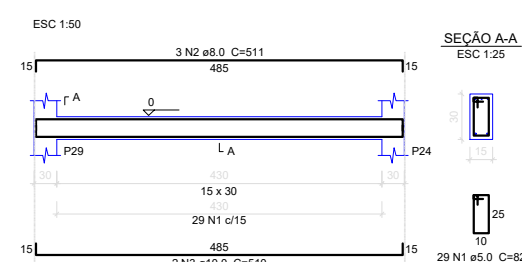
VB16  
ESC 1:50



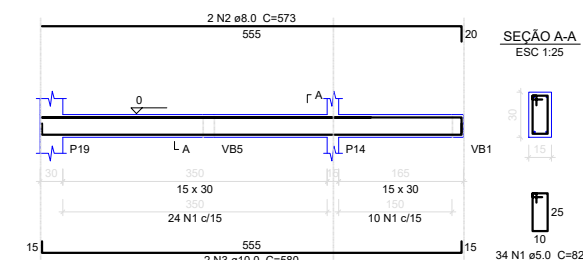
VB13  
ESC 1:50



VB17  
ESC 1:50



VB14  
ESC 1:50



## VIGAS BALDRAMES 2

Esc: 1:200



**PREFEITURA MUNICIPAL DE VÁRZEA GRANDE**  
Av. Castelo Branco, Espaço Municipal, 2500 - Centro Sul, Várzea Grande/MT  
CEP 78125-700 - Fone/Fax: 65 3688 8000

**LOCALIZAÇÃO:**  
AVENIDA PRINCIPAL S/N  
DISTRITO DE LIMPO GRANDE

**PROJETO:**  
PROJETO ESTRUTURAL

**OBRA:**  
CONSTRUÇÃO DE UM CENTRO CULTURAL  
PARA O DISTRITO DE LIMPO GRANDE

**DATA:**  
JANEIRO/2022

**UNIDADE:**  
METRO

**AUTOR DO PROJETO:**  
MATHEUS MARCANZONI LEITE  
ENGENHEIRO CIVIL CREA-MT 042157

**ÁREAS:**  
- ÁREA DO TERRENO: 1.032,30m²  
- ÁREA CONSTRUÇÃO: 184,00m²

**FOLHA Nº:**  
04/09